



STEP 1



STEP 2



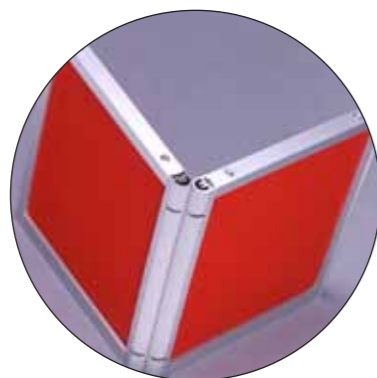
STEP 3



STEP 4



Introductions



Ever-changing market trends and evolving consumer needs require constant advancements in the field of display systems and product presentation, a feat which Formedge has consistently delivered for more

than 10 years. Its status as the leader in display systems stems from years of research and development and the constant search for refining technologies to provide the best systems in terms of reliability, flexibility and affordability while also maintaining its own unique identity.

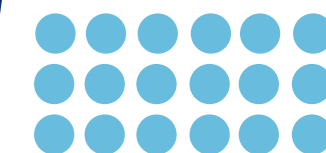
The Smartgear display system fulfills all the criteria admirably. Aesthetically-pleasing yet deceptively sturdy, it also utilizes the latest in display technology by way of its hinges, which is powered by a gear edged full depth system. This paves the way for endless design possibilities; mold it into any position you require to suit your needs. The Smartgear also renders screws and clips obsolete with its easy-assembly and dismantling systems. Its sturdy yet lightweight construction also means it is easy-assembly and dismantling system. Its sturdy yet lightweight construction also means it is easy to carry yet solid enough to withstand the hardest bumps. Reliable, flexible, durable and portable; inimitable character traits of the Smartgear which simply serve to separate the rest...from the best.



TRUE INNOVATION IN DISPLAY SYSTEM



Soar Above The Rest...



Scale Greater Heights in Innovative Design

SMART GEAR DISPLAY SYSTEM



FORMEDGE (M) SDN. BHD. (242482-H)
NO. 22 & 24, Jalan Teknologi 3/1,
Seksyen 3, Selangor Science Park 1,
kota Damansara, 47810 Petaling Jaya, Selangor,
Tel: 603 61566222 • Fax: 603 61572080
Email: formedge@tm.net.my
Website: www.formedge.com.my



• Model No: 2131 DH



An aesthetically - designed complete exhibition stand with black epoxy finish

• Model No: 21-102 SL



• PANELS •



• Model No: 2131 DH

A classic gold combination that is both elegant yet functional.



• Model No: 21-303 SLH • Model No: 2131 DH • Model No: 21-403 SLH

Ultralight System

• Model No: 11U4-H4



• Model No: 11U TR • Model No: 11U THH

Flexibility ensures better alternative than constructed displays

Mix and match. Tailor your requirements by combining a showcase and display panel.



• Model No: 2141



• Model No: 11U-3C



• Model No: 11U-5S

• Please note all designs can be custom suited for individual requirements • Available in assorted colours and carry bag.

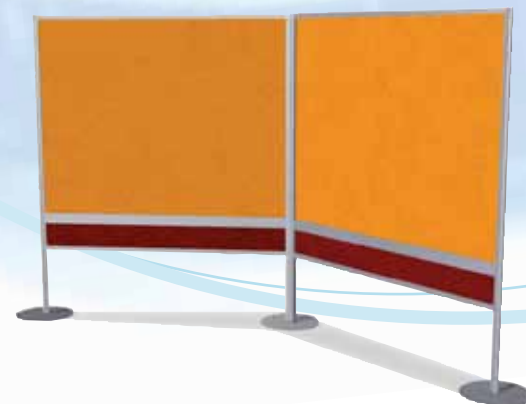


Step Into The World Of Creative Display



For more information, please call 03 6156 6222 or visit our website at www.formedge.com.my

• SmartGear WideScreen •



Available in different sizes, configurations and assorted colours



Model No: 21-400 SLH



Model No: 21-400 SL2



Model No: 21-003 H



Model No: 21-202



• FIXTURES •

The Formedge Promotion Kiosk is widely regarded as the premier display unit in its category. Its sleek and elegant design ensures that it will be the centrepiece in whatever the setting may be; be it exhibition halls, hotels or even shopping malls.

• Please note all designs can be custom suited for individual requirements • Available in assorted colours and carry bag.

• TABLETOPS •

Alternative base with round tabletop



Model No: 21-203

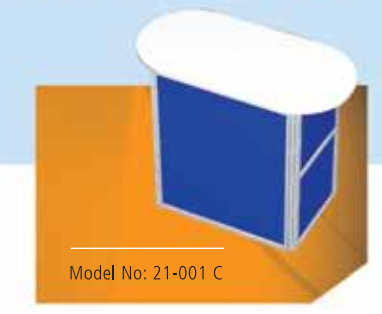
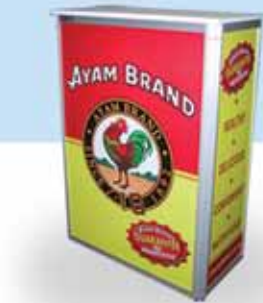
We have a range of tabletops to compliment your display booth



Model No: 21-001 A



Model No: 21-001 B



Model No: 21-001 C



Model No: 21-001 D



• Please note all designs can be custom suited for individual requirements • Available in assorted colours and carry bag.